

Business range

As one of the leading suppliers of **light steel structure villa**, **heavy steel structure workshop** and **apartment**, **color steel office building** and **labor house**, **container house**, **light wood structure house**, **wood log house** and **wood structure modular house** in China, we have exported our houses to over 50 countries through our overseas sales network.



Light steel structure villa



Heavy steel structure workshop



Color steel sandwich panel house



Container house



Light wood house



Prefab log house



Wood modular house

Production base and facility



Light steel workshop



Heavy steel workshop



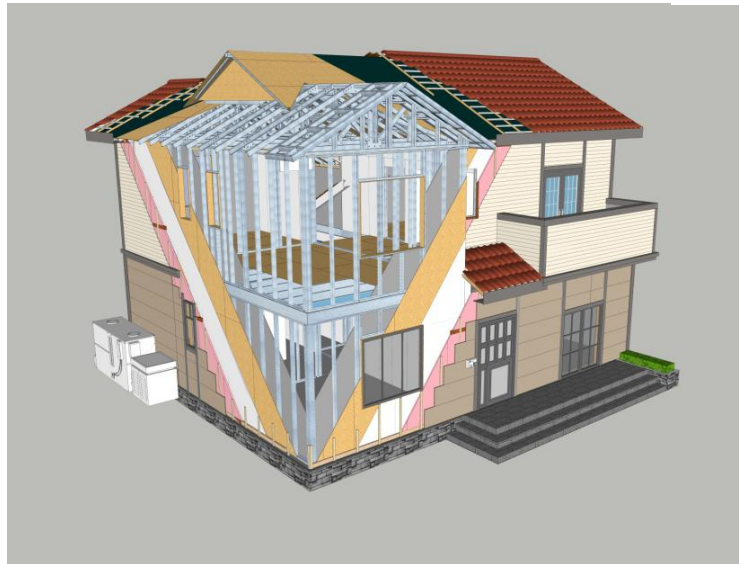
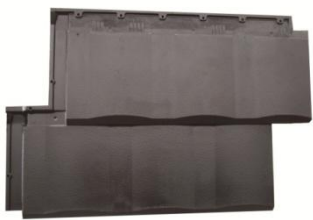
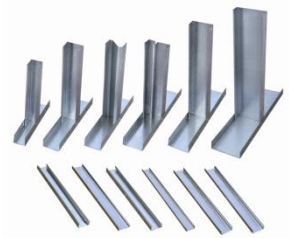
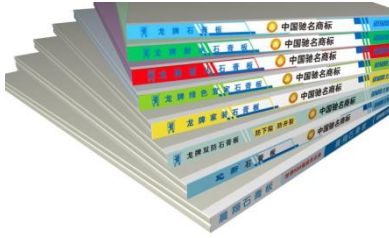
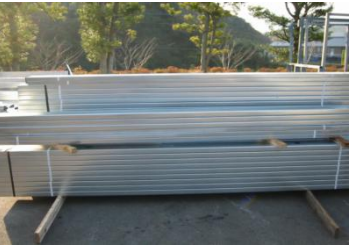
CAM Control System



Mounding machine

Components of the house

CNBM prefab house is an integration of our factory's products and our selected high quality products. All these give us the ability to supply our customer with first class house with different needs. We would like to invite our customers to explore the future of prefab house with us.



Light steel structure house

The light steel structure houses of our company should be erected on concrete foundation built at local site. Our light steel structure houses can be designed as residential villa, hotel, club according to different customer requirement.



Light steel structure villa specification		
Key Features	Item Title	Materials Description
House body	Main structure	Light Steel Structure, steel column, Structure board
	Exterior wall decoration	90 steel stud, glass wool, 10mm calcium silicate board, moisture-proof film, 19*50 steel stud, fiber cement board, exterior wall water-proof
	Roof/Cornice	Roof: Single-layer bituminized tiles, 3mm SBS water-proof rolling material, 15mm OSB board Cornice:75mm steel stud, calcium silicate board, putty paint
	Rain carrying system	PVC rain carrying system
	Doors and windows	Security door, paint-free door, glass door, plastic steel window, artificial marble
Finishing	Interior wall decoration	Ceiling grid, second floor 75*2 glass wool, first floor 75mm glass wool, waterproof moisture-proof membrane, 9.5mm plaster board, putty paint
	Interior ceiling	Fire proof gypsum board, putty and paint
	Water and electricity pipes	Water supply PPR pipe, drainage PVC pipe Switch socket panel, lamp
	Indoor ground	Floor and accessories, kitchen and washing room tile
	Other materials	Closet, washing basin, sink, shower
Installation	To install 200m2 house needs only 45 days by 6 professional workers	
Loading quantity	One 40' container can load 140 m ² of wood house	
Wind load	130km/h	
Anti-seismic grade	9 degree	
Life span	Around 50 years	
Remarks	This specification is for the reference, if there are differences from the actual condition, related adjustments need to be made according to the actual condition.	

Light steel structure

Foundation

- 1.Reinforcing bar
- 2.Strip foundation
- 3.Cushion
- 4.Anti-corrosion layer

Floor

- 5.Cement floor
- 6.Wall air troposphere

Wall system

- 7.Imitation wood board
- 8.Fiber cement board
- 9.Wood stud
- 10.Heat reservation board
- 11.Waterproof paper
- 12.Structural board
- 13.Steel column
- 14.Gypsum board

Flooring Structure:

15. Structure material
16. Corrugated steel board

Wall Structure

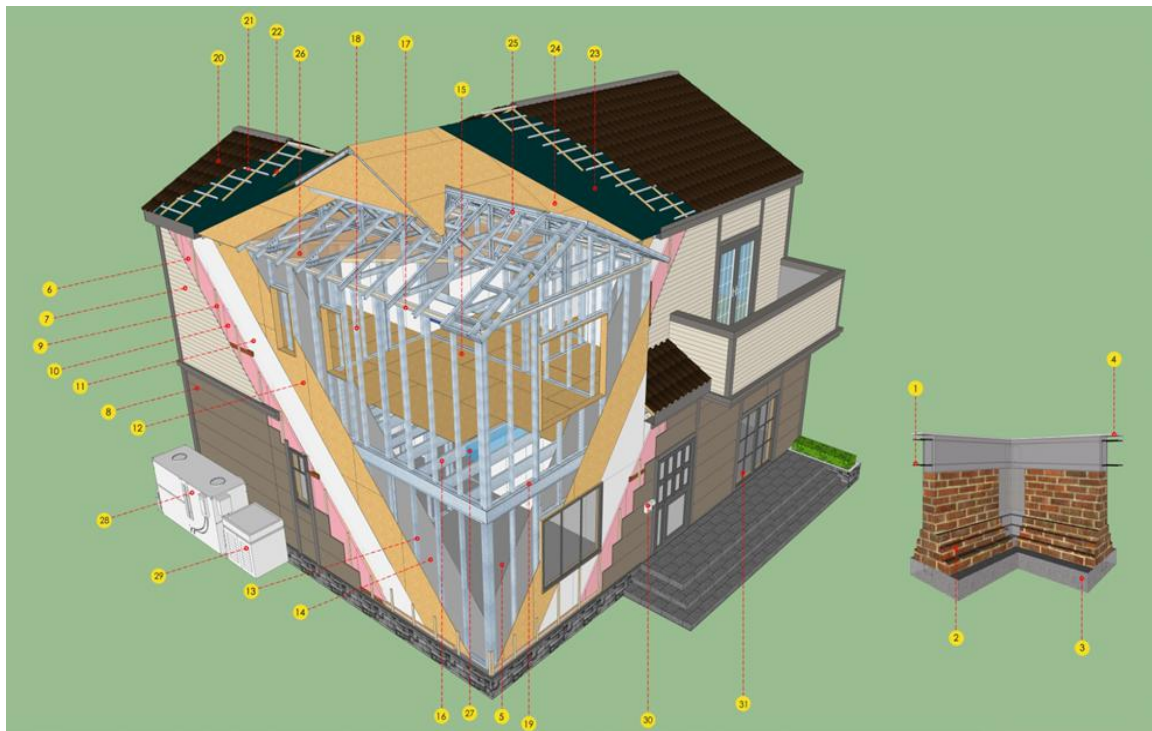
17. Top beam
18. Second floor wall pillar
19. Bottom beam

Roofing

20. Roof tile
21. Roof tile accessory
22. counter batten
23. Water proof layer
24. Structural board
25. Light steel roof truss
26. Second floor insulation layer

Equipment

27. Ventilation
28. Centralized dedusting system
29. Central air conditioning
30. Video Door phone
31. Infrared alarm system



Environmental Benefits

Energy saving - heat transfer coefficient $k=0.24w/sq.m.k$

Avoid thermal bridge in walls, floor and roof

Water saving - more than 90% saving

Low waste - no pollution

Sound insulation: walls-51db, ceiling-78db

Use almost entirely recyclable materials

Low dust pollution - in city construction



Benefits in Construction

Efficient use of architectural area - 8-10% improved space usage

Anti-earth quake - soft and light structure reduce the influence of earthquake

Anti-wind - strong structure

Light self-weight - lighter than 1/4 - 1/6 of traditional reinforced concrete structure

up to 4-6 floors

Extended choice of external decorative finishes



Financial Benefits

Lower price - lower capital investment

2-3 times faster than traditional reinforced concrete structure

No limit to land surface and efficient use of land

Highly durable -long life



Construction process



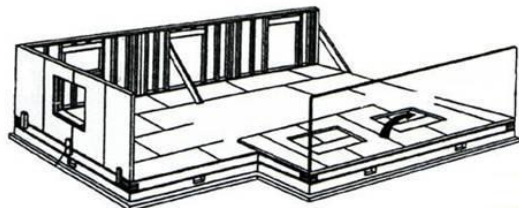
Concrete foundation



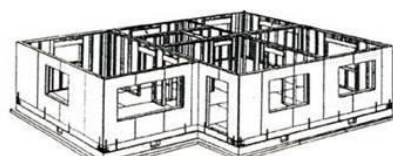
Ground floor steel structure



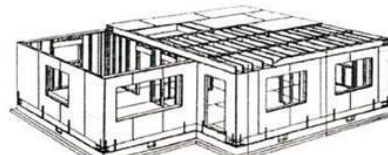
Ground floor board



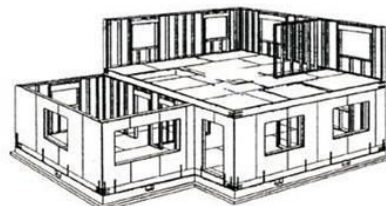
Ground floor wall



Ground floor interior wall



First floor structure



First floor wall structure



Roofing



45 days

Simple decoration

5-7days

Main structure
installation

On-site
assembling

Workshop
prefabrication

200m² single-detached home

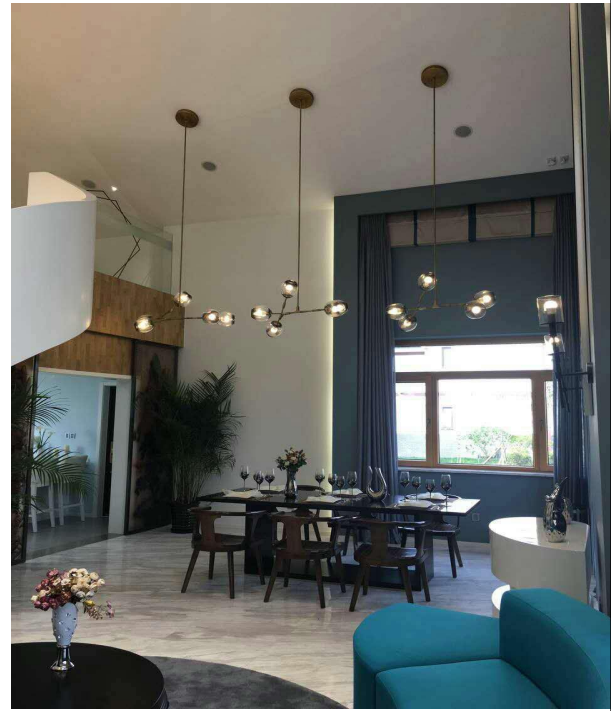
Energy saving 5.0 villa



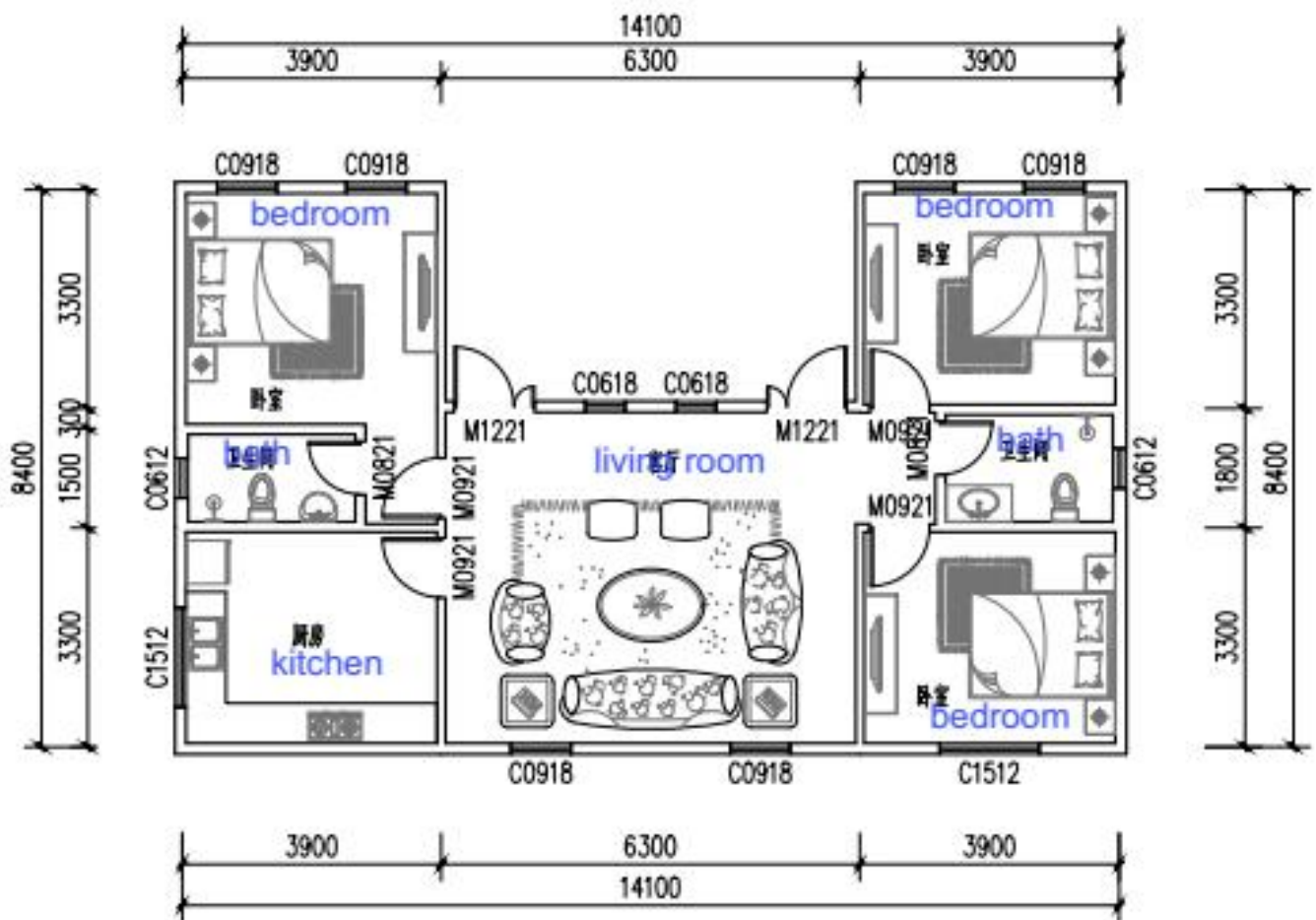
1F = 176.84 m²
Plan of the first story



2F = 117.7 m²
Plan of the second story



Modern style

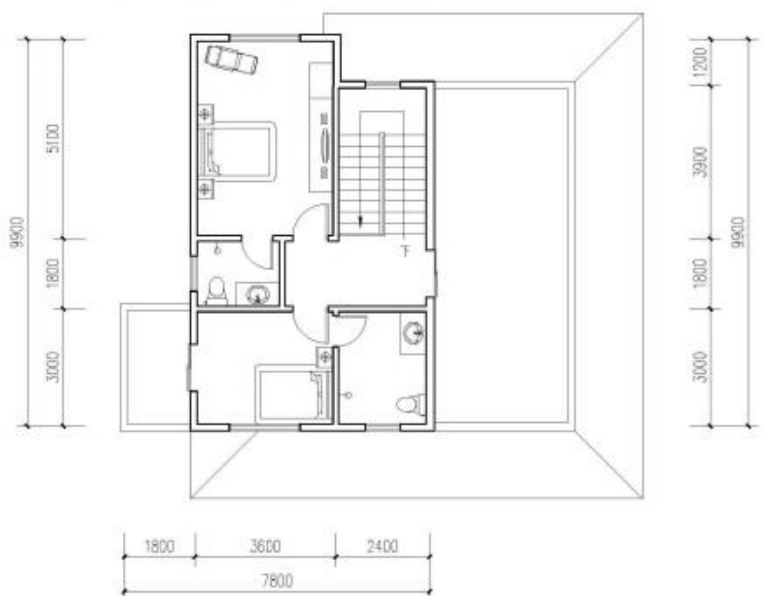
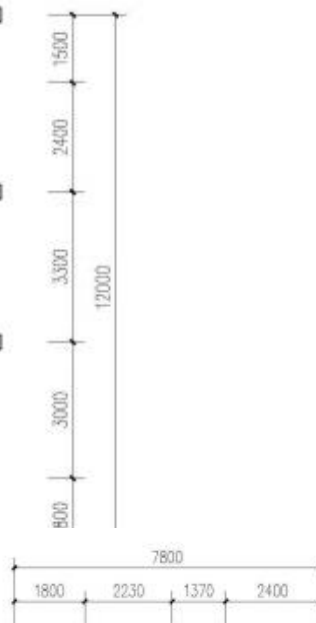
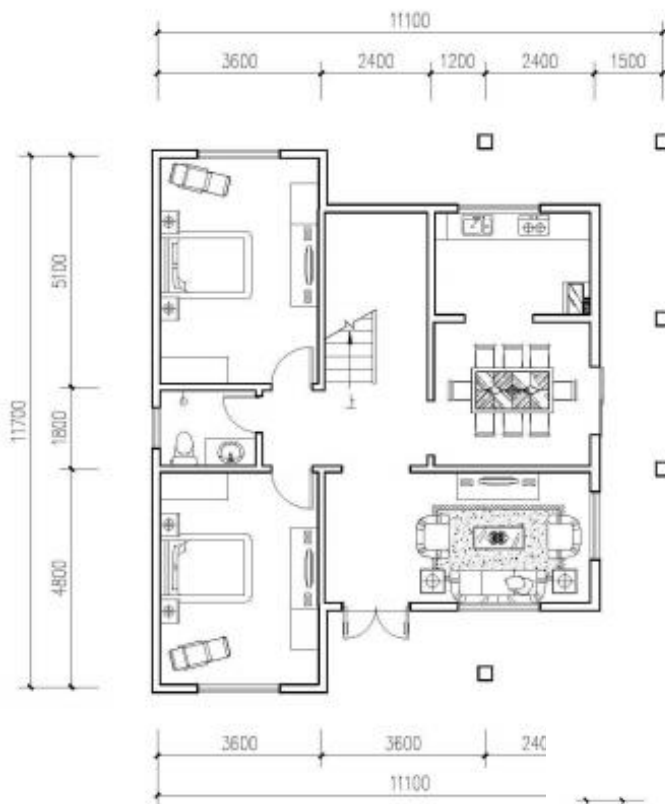


Model: one storey

Size: 103sqms

Including: 3 bedrooms, 2 bathrooms, living room and kitchen

Mediterranean style



**Model: Two storeys;
Size: 198sqms ;
Including: 4 bedrooms,
3 bathrooms,
living room and kitchen**

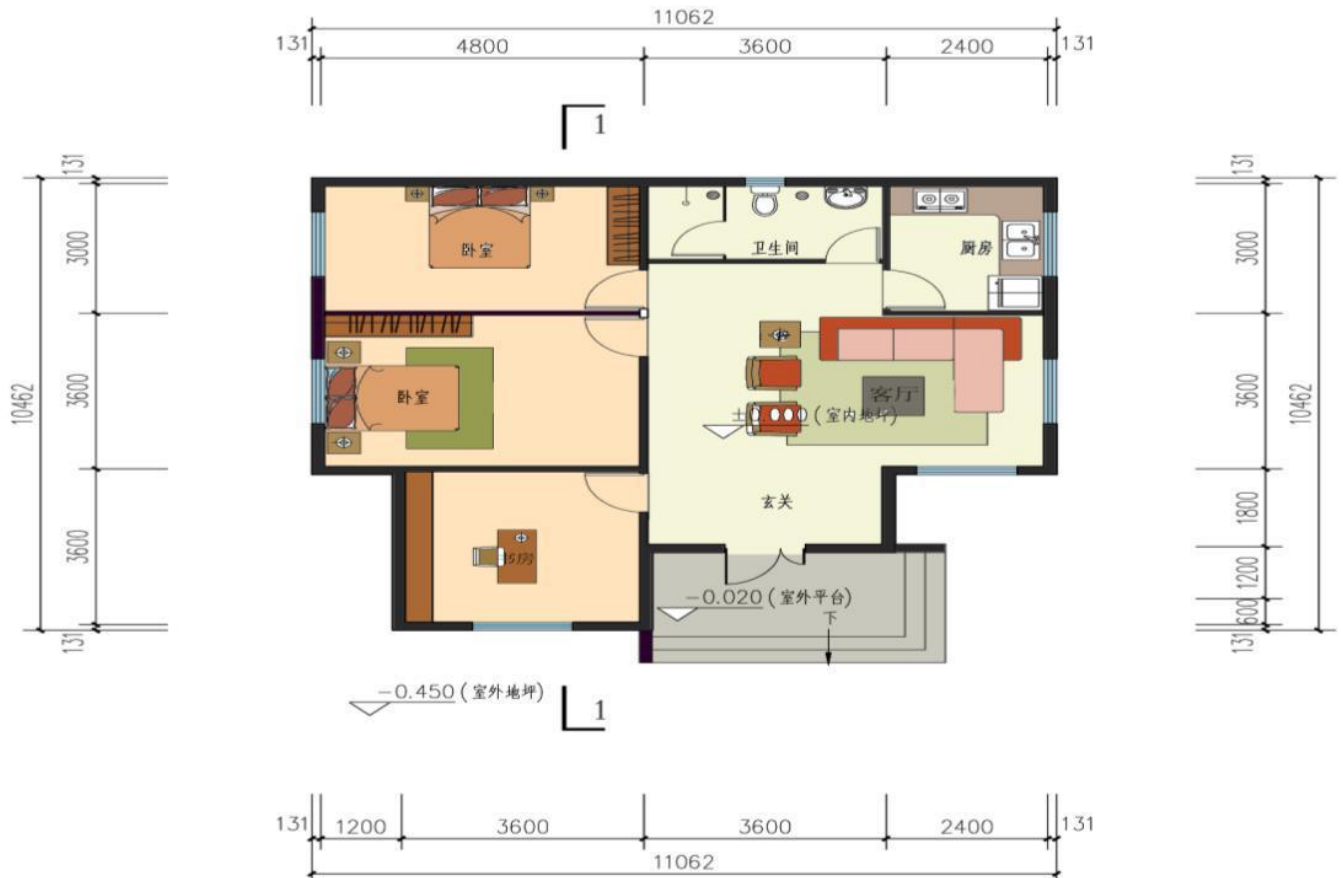
Luxury style



**Model: two storey;
Size: 323sqms ;
Including: 4 bedrooms
3 bathrooms
1 study room
living room
and kitchen**



Affordable house



Model: One storey;

Size: 98sqms ;

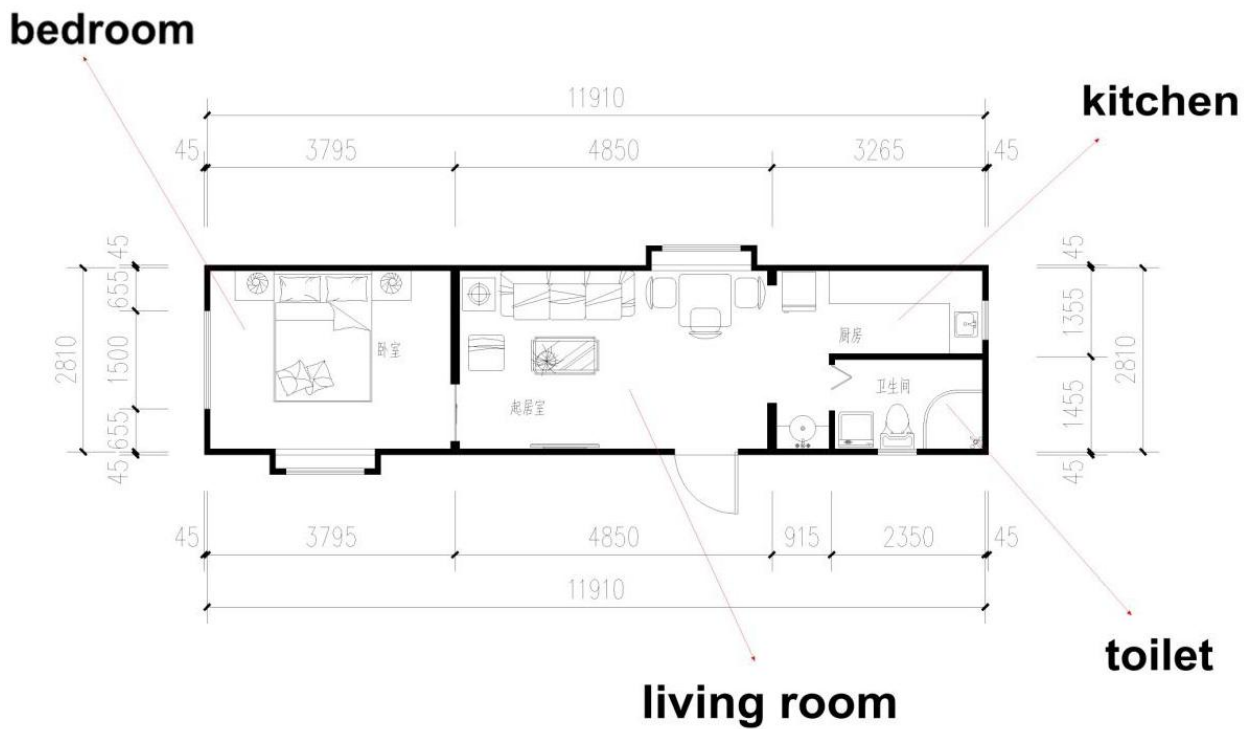
Including: 3 bedrooms,1 bathroom, living room and kitchen

Economical house



**Model: Two storeys;
Size: 198sqms ;
Including: 5 bedrooms,1 study room, 3 bathrooms, living room
and kitchen**

Container house



Model: 40FT ;
Size: 29sqms ;
Including: 1 bedroom,1 bathroom, living room and kitchen

More options



England style



Residential group



Project overseas--4500 houses in Zambia



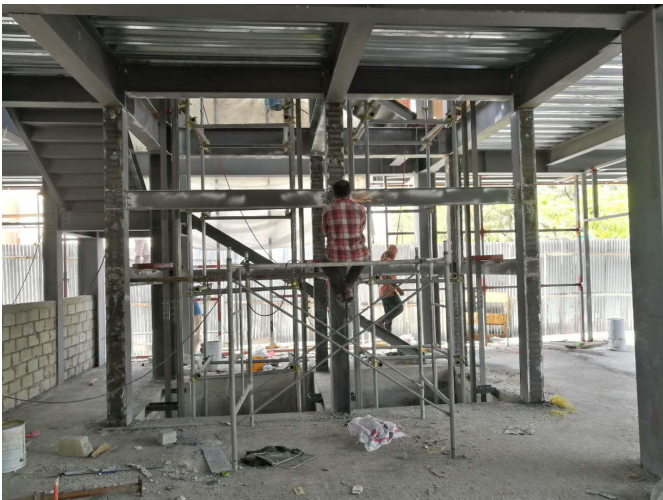
Private house in Mexico



250 Economical buildings in Venezuela



7-storey shopping mall in Maldives



400 shops (Outlets village) in Qatar



Residential apartment in China



5-star Lotus hotel in Inner Mongolia



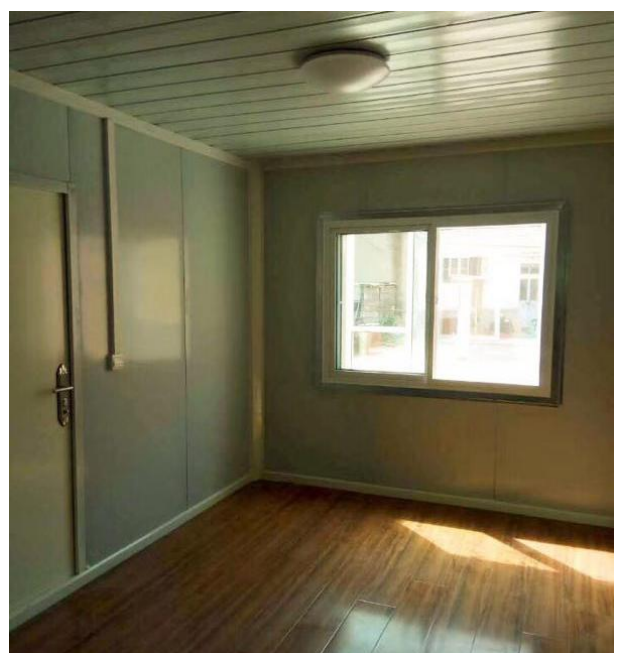
Sandwich panel house

The sandwich panel houses of our company should be erected on concrete foundation built at local site. This kind of houses can be designed as labor house, office, resettlement housing according to different customer requirement.



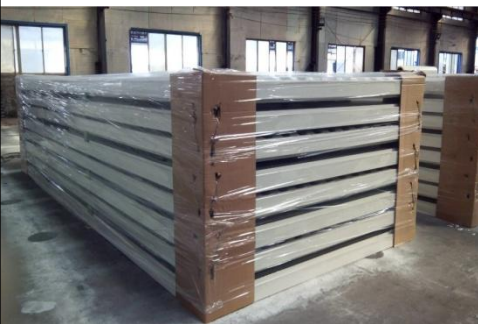
Customized type k house		
Key Features	Length	Customized
	Width	Customized
	Height	Between 3m to 3.5m
House body	Steel structure	Hot Galvanized or Painted steel structure Q195-Q235
	Wall panel	50mm,75mm,100mm or 150mm sandwich panel
	Roof panel	50mm,75mm,100mm or 150mm sandwich panel
	Outside door	Security door, Sandwich door or Aluminum door
	Inside door	Sandwich door
	Window	PVC sliding window
	Heat Insulation	EPS, Glass wool, Rock wool or PU
Finishing	Electricity and water system	Providing design
	Floor	Ceramic tiles or wooden floor
	Ceiling	Mineral wool acoustic board, calcium silicate board, PVC board
Installation	Ten skilled workers can install 1000m ² house in 15 days with instruction of our supervisor	
Loading quantity	One 40'HQ container can load 160 m ²	
Wind load	0.5 KN/m ²	
Anti-seismic grade	7 degree	
Life span	Around 20-30 years	
Remarks	This specification is for the reference, if there are differences from the actual condition, related adjustments need to be made according to the actual condition.	

Low cost sandwich panel house



Container Office

The container house of our company should be erected on concrete foundation built at local site. Our container houses can be designed as labor house, hotel, club according to different customer requirement.



Container house specification	
Length	6058mm(inner 5851mm)
Width	2438mm(Inner 2231mm)
Height	2791mm(Inner 2510mm)
Steel structure	Cold formed steel profiles in a thickness of 3mm to 4mm(bottom rails)
Wall panel	9mm chipboard panel, 60mm glass wool, 0.5 steel sheet
Roof panel	100mm glass wool
Outside door	40mm sandwich door with aluminum frame size 830mm*2030mm
Inside door	Sandwich door
Window	PVC sliding window size 800*1100mm; with PVC mosquito net and PVC rolling shutter
Heat Insulation	EPS, Glass wool, Rock wool or PU
Electricity and Water System	Providing design
Feature	Can be transported by truck and assembled very fast at site, easy to move anytime
Floor	Gray PVC flooring, 20mm plywood
Ceiling	9mm chip wood panel
Shipment	4 units can be connected into one bundle which can be shipped same as one 20' GP
Bearing load	2.5 KN/m ²
Life span	20 to 25 years
Remarks	This specification is for the reference, if there are differences from the actual condition, related adjustments need to be made according to the actual condition.

Container house



Container house



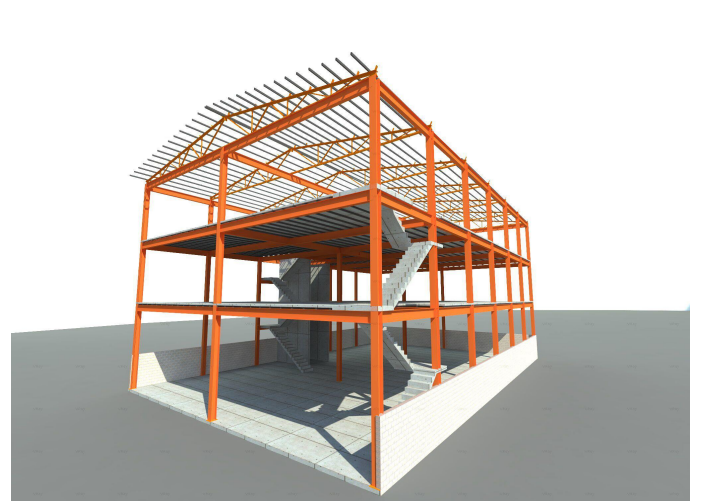
Heavy steel structure

CNBM can supply steel workshop, warehouse, hangar, poultry house, shed, office, apartment, circus, grandstand, hotel and high-rise steel structure building.

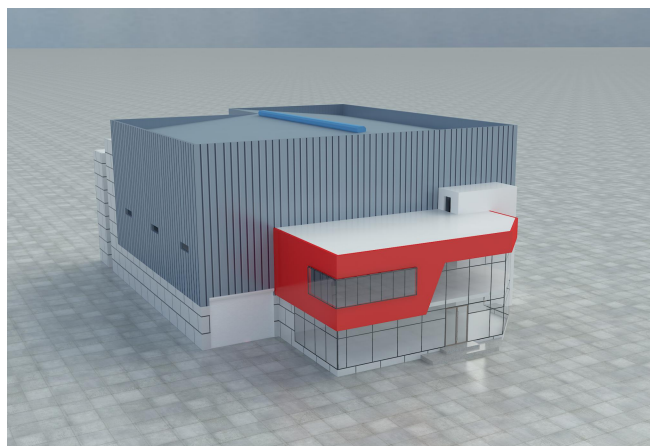
Heavy steel building-warehouse



Heavy steel building



Heavy steel building



Heavy steel building



High rising steel building



We are dedicated to do researches and explore the market in the field of multi-floor and high-rise steel structure building. With long-term cooperation with top ranked universities and research institutes, we have finished leap-forward development from multi-floor steel structure to high-rise steel structure building such as commercial building, office building and so on

No.	Project Name	Height (m)	Main components	Main Technology	Weight (MT)
1	Korean office building	108	Welded H beam Welded H column Box beam	Thick plate welding technology Bending and twisting technology	2200
2	Shanghai financial building	127	H beam H columns Reinforced plate	Complex structure fabrication technology Thick plate welding technology	1960
3	Algeria office building	230	Angel steel H steel Channel steel I steel	Irregular steel component welding technology	2834
4	Vietnam commercial building	101	Welded H beam Welded H column	Thick plate welding technology Overweight steel structure manufacturing technology	1728
5	Kuwait tower	263	Angel steel Welded H beam Box beam	Thick plate welding technology Bending and twisting technology	4780

Prefabricated wooden house

The prefabricated wooden houses of our company are mainly composed of light wood house, prefab log house and wooden structure modular house. Most house models should be erected on concrete foundation built at local site. Our prefabricated wooden house can be designed as residential villa, hotel, club, workers' dormitory, site office according to different customer requirement.



Light wooden house



Prefab log house



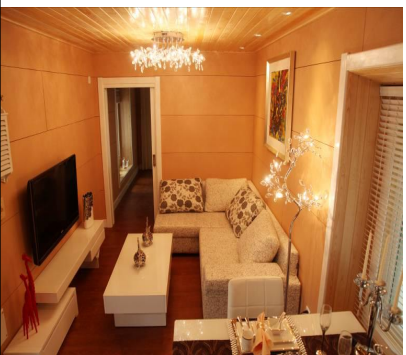
Wooden structure modular house

Prefab log house



Prefab log house structure		
Key Features	Item Title	Materials Description
House body	Main structure	Exterior wall: 'D' logs 115mm ; Interior wall: square logs 90mm
	Roofing	Asphalt roof tiles and packages
	Eaves/ceiling	Solid wood supporting beams, red snow cornice, ceiling board
	Doors and windows	Wooden doors ,aluminum alloy windows
Finishing	Water and electricity pipes	Cold and hot water pipe, drainage pipe Electric line
	Indoor ground	Floor and accessories, kitchen and washing room tile
	Other materials	Bathroom and kitchen wall tile, kitchen and washing room ceiling, terrace waterproofing, stair and handrail, base wall decoration
Installation	To install 150m ² house needs only 40 days by 4 professional workers	
Loading quantity	One 40' container can load 120 m ² of wood house	
Wind load	130km/h	
Anti-seismic grade	9 degree	
Life span	Around 50 years	
Remark	This specification is for the reference, if there are differences from the actual condition, related adjustments need to be made according to the actual condition.	

Wooden structure modular house



Light wood house structure		
Key Features	Item Title	Materials Description
House body	Main structure	Ground beam anticorrosive wood, SPF structure, wall, floor and roof structure board, structural connector
	Exterior wall decoration	Fiber cement board, breathing paper, accessories, ventilation wooden keel, OSB board, rock wool
	Roofing	Heat reservation board, fittings, waterproofing materials
	Eaves/ceiling	Solid wood supporting beams, ceiling board
	Rain carrying system	PVC rain carrying system
	Doors and windows	Security door, wooden door and PVC windows, exterior and interior window frame
Finishing	Interior wall decoration	Fire proof gypsum board, putty and paint, wallpaper
	Interior ceiling	Fire proof gypsum board, putty and paint
	Water and electricity pipes	Cold and hot water pipe, drainage pipe Electric line
	Indoor ground	Floor and accessories, kitchen and washing room tile
	Other materials	Bathroom and kitchen wall tile, calcium silicate board, kitchen and washing room ceiling, decoration wall, terrace waterproofing, stair and handrail, base wall decoration
Installation	To install 150m ² house needs only 40 days by 4 professional workers	
Loading quantity	One 40' container can load 120 m ² of wood house	
Wind load	130km/h	
Anti-seismic grade	9 degree	
Life span	Around 50 years	
Remark	This specification is for the reference, if there are differences from the actual condition, related adjustments need to be made according to the actual condition.	